

SENCO®

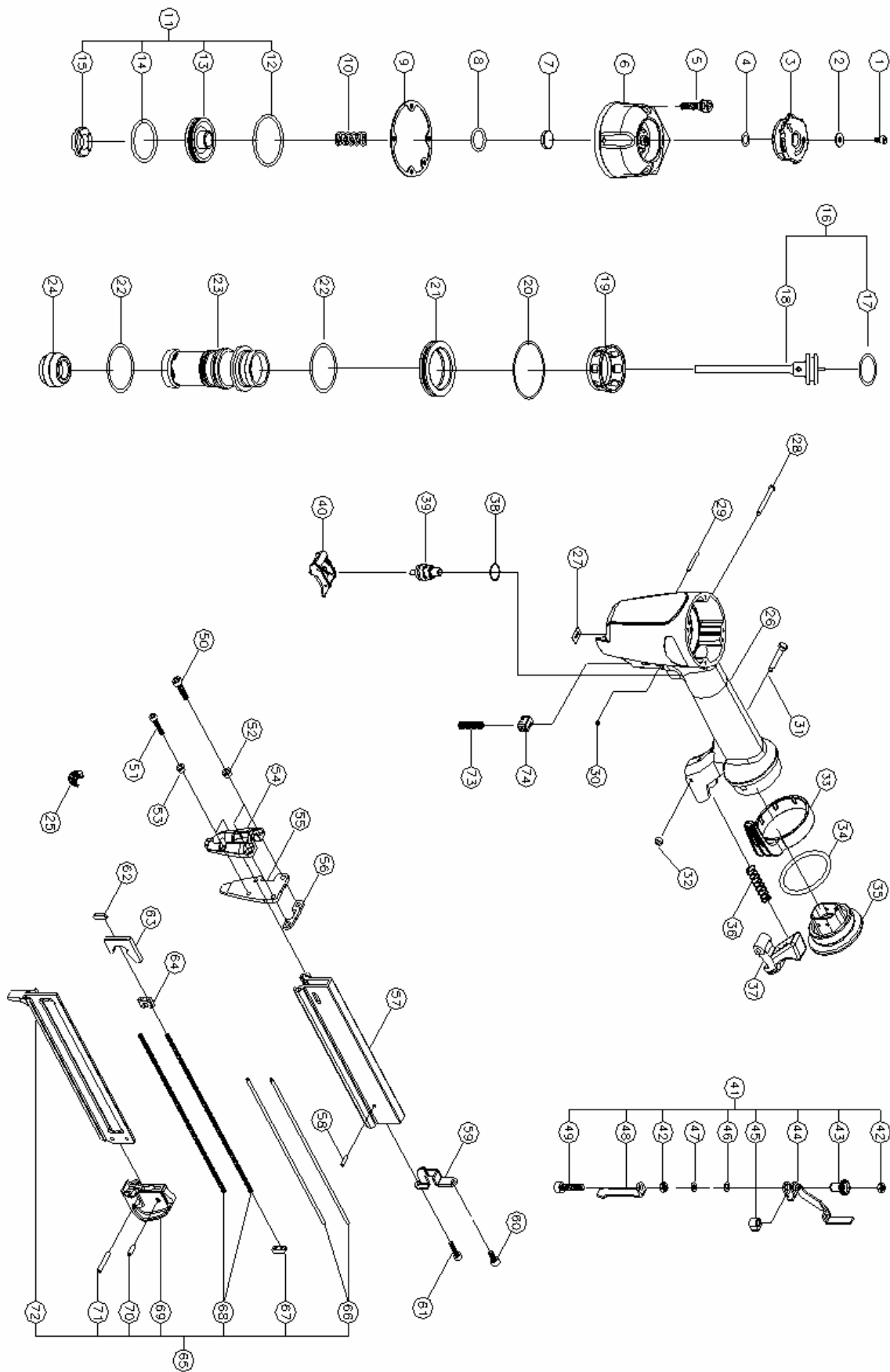
S150LS

Parts Reference Guide



Reversion 24-10-2008 S150LS V2

Verpa Senco B.V.
Pascallaan 88
8218 NJ Lelystad



S150LS

REPLACEMENT PARTS LIST • LISTA DE PARTES DE REPUESTO • ERSATSTEILE-LISTE • LISTE DE PIÈCES DE RECHANGE

| POS | PART NO | DESCRIPTION | DESCRIPCION | BESCHREIBUNG | DESIGNATION |
|-----|------------|---------------------------|---------------------------|-------------------------|-----------------------------|
| 1 | A0000-1211 | SCREW 4*8 | TORNILLO 4*8 | SCHRAUBE 4*8 | VIS 4*8 |
| 2 | A0005-0691 | WASHER 12*1 | ARANDELA 12*1 | SCHEIBE 12*1 | RONDELLE 12*1 |
| 3 | A0304-0651 | EXHAUST COVER | CUBIERTA DE ESCAPE | AUSPUFFABDECKUNG | COUVERCLE D'ÉCHAPPEMENT |
| 4 | A0200-2471 | O-RING 7.59*2.62 | SELLO DE GOMAS 7.59*2.62 | DICHTRING 7.59*2.62 | JOINT 7.59*2.62 |
| 5 | B0000-0031 | SCREW | TORNILLO | SCHRAUBE | VIS |
| 6 | A0301-1721 | CAP, TOP | TAPA, ARRIBA | KAPPE, OBEN | BOUCHON, À L'ÉCHAPPEMENT |
| 7 | A0311-0451 | SEAL, AIR | SELLO, AIRE | DICHTUNG, LUFT | JOINT, AIR |
| 8 | A0200-0221 | O-RING 15*2.5 | SELLO DE GOMAS 15*2.5 | DICHTRING 15*2.5 | JOINT 15*2.5 |
| 9 | A0205-0641 | GASKET | ARANDELLA | DICHTUNG | JOINT |
| 10 | A0100-0631 | SPRING | RESORTE | FEDER | RESSORT |
| 11 | B0300-2221 | FIRING VALVE PISTON SET | SET PISTON DE VAVULA | VENTILPISTONSATZ | LIASSE DE PISTON DE VALVE |
| 12 | A0200-0711 | O-RING 33.5*2.5 | SELLO DE GOMAS 33.5*2.5 | DICHTRING 33.5*2.5 | JOINT 33.5*2.5 |
| 13 | A0308-0341 | FIRING VALVE PISTON "POM" | PISTON DE VAVULA "TPE" | VENTILPISTON "TPE" | LIASSE DE PISTON "TPE" |
| 14 | A0200-0601 | O-RING 26.59*2.95 | SELLO DE GOMAS 26.59*2.95 | DICHTRING 26.59*2.95 | JOINT 26.59*2.95 |
| 15 | A0313-0041 | PISTON STOPPER "TPU" | TOPE DE PISTON "TPE" | PISTONPUFFER "TPE" | ARRET DE PISTON "TPE" |
| 16 | B0600-4671 | PISTON UNIT | UNIDA PISTON | PISTONEINHEIT | PIECE DE PISTON |
| 17 | A0200-1281 | O-RING 22.4*3.3 | SELLO DE GOMAS 22.4*3.3 | DICHTRING 22.4*3.3 | JOINT 22.4*3.3 |
| 18 | B0600-4661 | PISTON SET | SET PISTON | PISTONSATZ | LIASSE DE PISTON |
| 19 | A0305-0081 | SLEEVE RETAINER "POM" | RETEN "POM" | SICHERUNGSRIICH "POM" | TERENUE "POM" |
| 20 | A0200-0271 | O-RING 44.8*2.6 | SELLO DE GOMAS 44.8*2.6 | DICHTRING 44.8*2.6 | JOINT 44.8*2.6 |
| 21 | A0800-0391 | SPACER | SEPARADOR | DISTANZSTÜCK | ENTRETOISE |
| 22 | A0200-0071 | O-RING 31*2.5 | SELLO DE GOMAS 31*2.5 | DICHTRING 31*2.5 | JOINT 31*2.5 |
| 23 | A0303-0941 | SLEEVE, CYLINDER | MANGA CILINDRO | ZYLINDERHÜLSE | CHEMISE CYLINDRE |
| 24 | A0309-0741 | BUMPER | AMORTIGUADOR | PUFFER | CHAMISSSEUR |
| 25 | A0204-0311 | GRIP | BUJE | HANDGRIFF | GAINE |
| 26 | B0400-0911 | BODY SET | SET CUERPO | KORPERSATZ | LIASSE DE CORPS |
| 27 | A0310-0361 | NOZZLE WASHER | ARANDELA TOBERA | DUESESCHIEBE | RONDELLE BUSE |
| 28 | A0006-0501 | STEP PIN | PASADOR | STIFT | GOUPILLE |
| 29 | A0011-0161 | SPRING PIN 3*24 | PASADOR RESORTE 3*24 | FEDER STIFT 3*24 | RESSORT GOUPILLE 3*24 |
| 30 | A0005-0311 | PIN RETAINER 5.5*2 | PASADOR TORICA | STIFTSICHERUNG | GOUPILLE RETENUE |
| 31 | A0006-0411 | PIN | PASADOR | STIFT | GOUPILLE |
| 32 | A0005-0291 | PIN RETAINER 6*2.9 | PASADOR TORICA | STIFTSICHERUNG | GOUPILLE RETENUE |
| 33 | A0316-0331 | BELT HOOK | GANCHO DE CINTURON | GURTHAKEN | CROCHET DE CEINTURE |
| 34 | A0200-2851 | O-RING 38*3.5 | SELLO DE GOMAS 38*3.5 | DICHTRING 38*3.5 | JOINT 38*3.5 |
| 35 | A0306-1251 | TAIL COVER | CUBIERTA DE COLA | RÜCKSEITEABDECKUNG | COUVERCLE DE QUEUE |
| 36 | A0101-0191 | SPRING | RESORTE | FEDER | RESSORT |
| 37 | A0709-0301 | CLICK LEVER | PALANCA CLICK | CLICK HEBEL | LEVIER CLICK |
| 38 | A0200-1091 | O-RING 11*1.05 | SELLO DE GOMAS 11*1.05 | DICHTRING 11*1.05 | JOINT 11*1.05 |
| 39 | B0500-1381 | TRIGGER VALVE SET | SET GATILLO VALVULA | AUSLÖSERSATZVENTIL | LIASSE GACHETTE DE VALVE |
| 40 | B0500-1481 | TRIGGER SET | SET GATILLO | AUSLÖSERSATZ | LIASSE GACHETTE |
| 41 | B0700-2711 | RELEASE CATCH | GUIA | FUHRUNG | GUIDE |
| 42 | A0004-0011 | NYLON NUT M4 | NYLON TUERCA M4 | NYLON MUTTER M4 | ECROU NYLON M4 |
| 43 | A0004-0212 | SAFETY ADJUSTMENT WHEEL | RUEDA DE ADJUSTE | EINREGELRAD | MOLETTE DE REGLAGE |
| 44 | A0711-1061 | RELEASE CATCH (B) | GUIA (B) | FUHRUNG (B) | GUIDE (B) |
| 45 | A0710-0391 | SPACER | SEPARADOR | DISTANZSTÜCK | ENTRETOISE |
| 46 | A0005-0061 | E-RING φ5 | E-RING φ5 | E-RING φ5 | E-RING φ5 |
| 47 | A0005-1251 | WASHER #7*4*0.3t | ARANDELA #7*4*0.3t | SCHEIBE #7*4*0.3t | RONDELLE #7*4*0.3t |
| 48 | A0711-1051 | RELEASE CATCH (A) | GUIA (A) | FUHRUNG (A) | GUIDE (A) |
| 49 | A0000-0861 | SCREW 4*30 | TORNILLO 4*30 | SCHRAUBE 4*30 | VIS 4*30 |
| 50 | A0000-0091 | SCREW M5*20 | TORNILLO M5*20 | SCHRAUBE M5*20 | VIS M5*20 |
| 51 | A0000-0041 | SCREW M4*20 | TORNILLO M4*20 | SCHRAUBE M4*20 | VIS M4*20 |
| 52 | A0710-0411 | SPACER | SEPARADOR | DISTANZSTÜCK | ENTRETOISE |
| 53 | A0710-0401 | SPACER | SEPARADOR | DISTANZSTÜCK | ENTRETOISE |
| 54 | A0712-0491 | RELEASE CATCH COVER | CUBIERTA DE GUIA | FUHRUNGSABDECKUNG | COUVERCLE DE GUIDE |
| 55 | A0801-1821 | DRIVER GUIDE | GUIA | FUHRUNG | GUIDE |
| 56 | A0800-0491 | SPACER | SEPARADOR | DISTANZSTÜCK | ENTRETOISE |
| 57 | A0700-0982 | UPPER MAG | CARGADOR | MAGZIN | MAGASIN |
| 58 | A0011-0131 | SPRING PIN 3*10 | PASADOR RESORTE 3*10 | FEDER STIFT 3*10 | RESSORT GOUPILLE 3*10 |
| 59 | A0706-0801 | SUPPORT | SOPORTE | TRAGER | SUPPORT |
| 60 | A0000-0181 | SCREW M5*10 | TORNILLO M5*10 | SCHRAUBE M5*10 | VIS M5*10 |
| 61 | A0000-0521 | NYLOK SCREW M4*12 | TORNILLO M4*12 NYLOK | NYLOK SCHRAUBE M4*12 | VIS M4*12 NYLOK |
| 62 | A0719-0211 | FEEDER SHOE STOP | TOPE DE ALIMENTADOR | KLAMMERSCHIEBERPUFFER | ARRET DE POUSSOIR |
| 63 | A0707-0631 | FEEDER SHOE | ALIMENTADOR | KLAMMERSCHIEBER | POUSSOIR |
| 64 | A0719-0391 | SPRING HOLDER | SOPORTE RESORTE | FEDERHALTERUNG | CAVALIER RESSORT |
| 65 | B0700-2701 | MAGAZINE SET | SET CARGADOR | MAGZINSATZ | LIASSE DE MAGASIN |
| 66 | A0708-0211 | SPRING GUIDE | GUIA RESORTE | FEDERFUHRUNG | GUIDE RESSORT |
| 67 | A0719-0221 | SPRING RETAINER | TORICA RESORTE | FEDERSICHERUNG | RETENUE RESSORT |
| 68 | A0100-0641 | PUSHER SPRING | ALIMENTADOR RESORTE | FEDERVORSCHIEBER | POUSSOIR RESSORT |
| 69 | A0718-0191 | TAIL COVER | CUBIERTA DE COLA | RÜCKSEITEABDECKUNG | COUVERCLE DE QUEUE |
| 70 | A0011-0051 | OUTER SPRING PIN 4*10 | PASADOR RESORTE 4*10 | FEDER STIFT 4*10 | RESSORT GOUPILLE 4*10 |
| 71 | A0011-0291 | SPRING PIN 4*24 | PASADOR RESORTE 4*24 | FEDER STIFT 4*24 | RESSORT GOUPILLE 4*24 |
| 72 | B0700-2601 | NAIL TANK ASS'Y | ASS. DEPOSITO DE CLAVOS | NAGELBEHÄLTZERZUSAM.BAU | ASSEMBLE RÉSERVOIR DE CLOUS |
| 73 | A0100-3091 | SPRING | RESORTE | FEDER | RESSORT |
| 74 | A0712-0341 | SAFETY GUIDE PLATE | PLACA GUIA | FUHRUNGSPLATTE | PLAQUE DE GUIDE |